

ClassicCarTuning

Tel: +31 (0) 653 740 600
 info@classiccartuning.com
 www.classiccartuning.com

De Bouw 1-A
 NL-3991 SX Houten
 The Netherlands

C.G.T. computerized Ignition System for Vintage Lancia vehicles

Mounting instruction **high capacity Alternator Lancia Flaminia**

Content package:

1x Alternator	JOEL
1x Bolt	M8 x 35 with 1 washers and retaining ring
1x Bolt	M10 x 50 with 2 washers, retaining ring and nut
1x Bolt	M8 x 80 with 1 washers, retaining ring and nut
1x Mounting support	
1x Distance spacer	10 x 20mm with hole 10mm
1x Distance spacer	13 x 20mm with hole 8.5mm

Figure 1

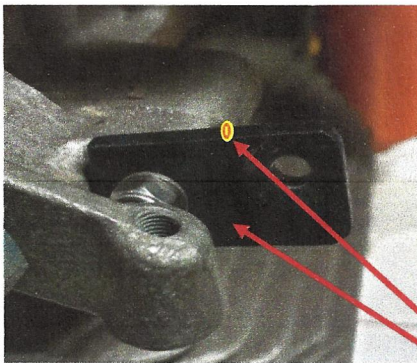
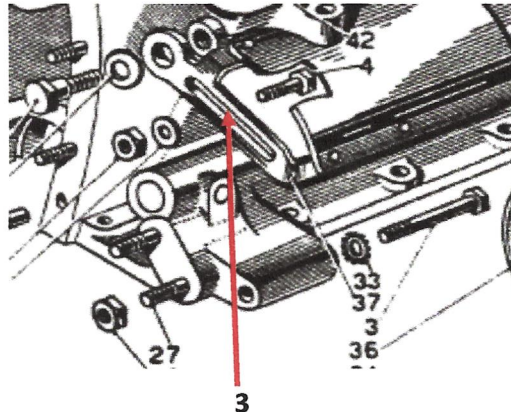


Figure 2



- 1 Disassemble the old alternator, tensioner bracket and V-belt
- 2 Mount the support, yellow dot upwards, with the M8 x 80 bolt. (Figure 1) and mount the locknut. (not to tight)
It is possible that the recess on the motor is not completely straight. Then re-position the support slightly.
- 3 Adjust the tensioner bracket to 10mm and make a kink in the heat shield.(Figure 2 and 3)
- 4 Mount the alternator on the support with the bolt M8 x 35 and 13mm spacer. (not to tight)
- 5 Mount the tensioner bracket and mount the alternator with the bolt M10 x 50 and 10mm spacer. (sometimes you might be to tap the support up-wards.)
- 6 Tighten all bolts/nuts firmly.
- 7 Mount the V-belt and adjust the V-belt (Gates 6284MC AVX10 x 1088 La)

Figure 3

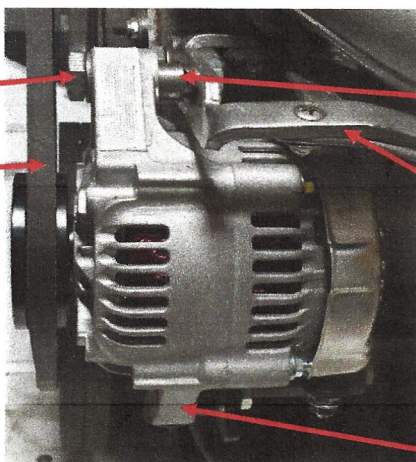


Figure 4

Alternator connection

